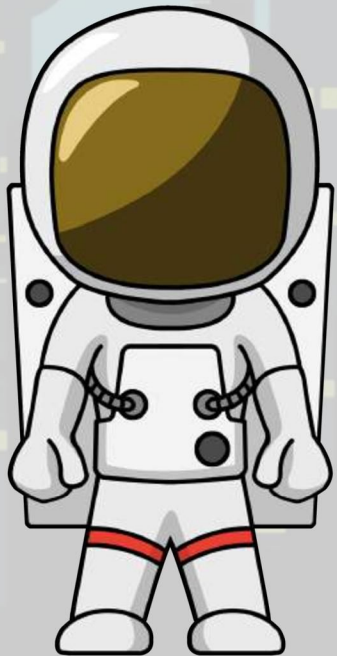


APOSTROPHES



Write sentences that involve using an apostrophe to show that the characters own something.



Information Bank

Use the **apostrophe** to show possession. To show possession with a singular noun, add an apostrophe plus the letter **s**.

e.g.

The boy's ball.

If the word ends in an **s** then simply add an apostrophe to the end.

e.g.

The boys' ball